



Report Number: JR0023
GMP Ancestor: n/a
Prepared by: Judy Riffel
Date: 9 September 2022
Related Codes: GMP-173, GMP-194, GMP-203, GMP-206

Purpose: To present a history of Frogmore Plantation

Discussion:

Not to be confused with the plantation of the same name in Concordia Parish, Louisiana, Frogmore Plantation in Pointe Coupee Parish was owned by a group of formerly enslaved men descended from the GU272. The seven men purchased the property in 1897, formed the Frogmore Plantation Company, and operated it until 1905 when they partitioned the property among themselves.

The group of seven men consisted of two sets of brothers, who were also cousins to each other, and one individual who was apparently unrelated. Benjamin and Robert Scott were sons of James Scott (GMP-173) and Caroline Butler (GMP-203). Nace, Ambrose, Alexius, Jr., and Arnold, were sons of Alexius Scott, Sr. (GMP-194), and Ann Butler (GMP-206). James and Alexius Scott, Sr., were brothers, and Caroline and Ann Butler were sisters, making the two sets of cousins doubly related. The seventh man was Douglas Hamilton, married to Joanna Semple or Sample.¹ The Scotts and Butlers had been enslaved on Jesse Batey's West Oak Plantation on Bayou Maringouin in Iberville Parish.

In 1897 the seven men purchased Frogmore Plantation from Miss Harry Augustus Lyons Floyd, a native and resident of San Francisco, California. Her family, the Lyons and Bowmans, had owned the plantation for many years. She was the only surviving child and heir of her wealthy parents, Richard S. Floyd and Cora Lyons.² The sales price was \$6,000, \$2,000 of which was paid in cash, which was borrowed from a third party, and the remainder in three promissory notes of \$1,333.33 each bearing 6% interest. The third party lender of \$2,160 was Theodore Dreyfus, a Pointe Coupee Parish merchant, to whom the men signed six notes for \$360 each, payable annually for six years. Four of the men, Arnold, Robert, Alexius, and Ben, signed their names. The other three made their marks.³

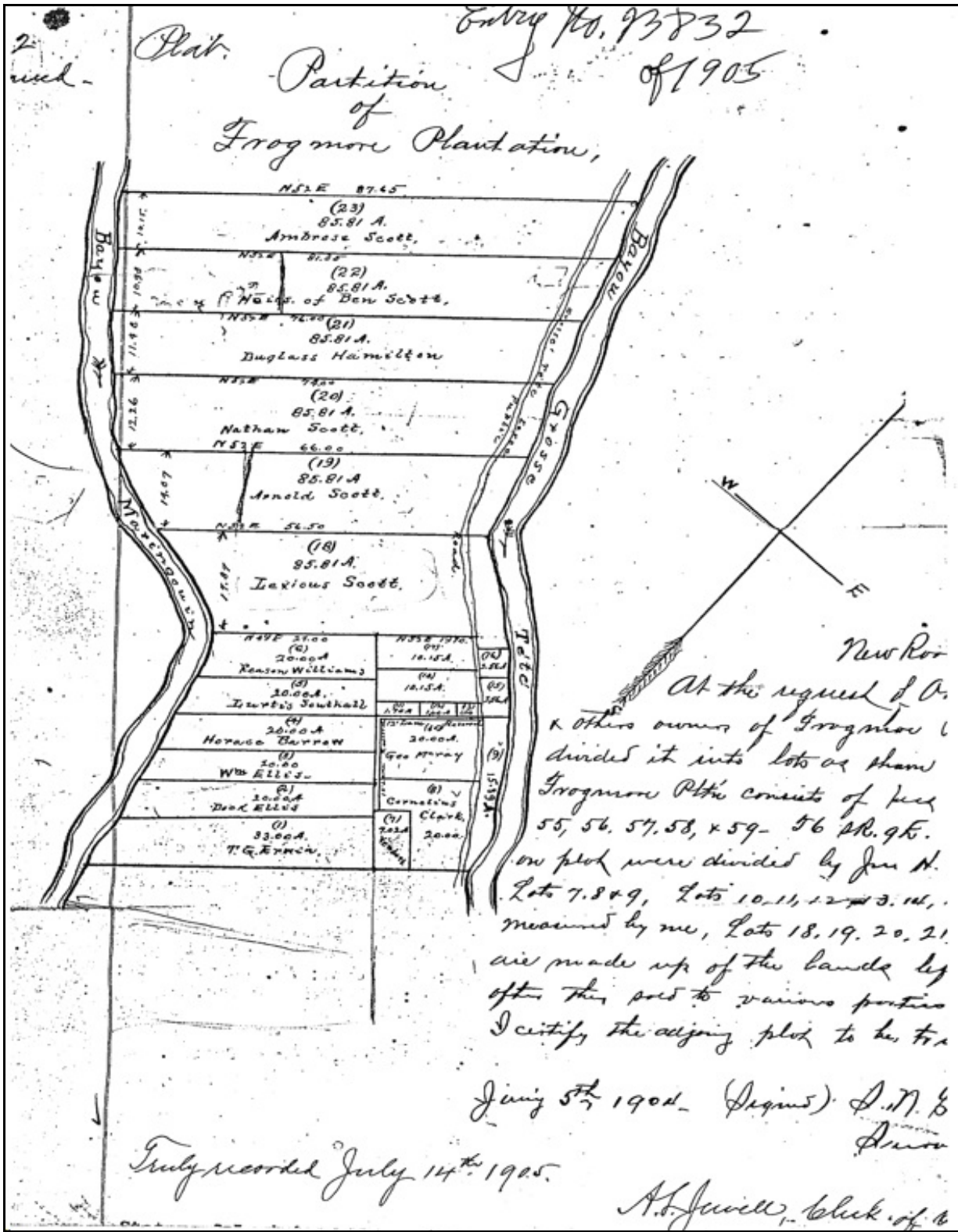
Frogmore Plantation consisted of 800 acres situated between Bayou Maringouin and Bayou Grosse Tete a short distance above West Oak Plantation and across the Iberville Parish border in Pointe Coupee Parish. In the 1850s, it produced cotton and sugar.



Frogmore Plantation consisted of sections 55, 56, 57, 58, and 59, shown on this 1858 map as belonging to James Bowman. Source: Map of the parishes of Pointe Coupee, West Baton Rouge, and Iberville: including parts of the parishes of St. Martins and Ascension, Louisiana, Norman B. Leventhal Map and Education Center at the Boston Public Library Digital Collections.

In 1898 or 1899, one of the partners, Benjamin Scott, died and his widow, Martha Ford, and children inherited his share. Then in 1905, the partners declared that they no longer wished to remain in “indivision” of the property. A survey of the plantation was made, revenues were stated, and the land was partitioned except for seven acres that were to be sold later.⁴

Of the remaining partners, Douglas Hamilton died between 1910 and 1920. Alexius Scott, Jr., died in 1934 in New Orleans.⁵ Arnold Scott died in East Feliciana Parish in 1935.⁶ Robert Scott died in 1936 in Maringouin.⁷ Nace or Nathan Scott died in 1938 in Pointe Coupee Parish.⁸ And, Ambrose Scott died in 1942 in Pointe Coupee Parish.⁹ Some of Ben Scott’s children remained in the Pointe Coupee Parish area, but several moved away to St. Landry Parish, Louisiana; Ouachita County, Arkansas; New Orleans, Louisiana; and Los Angeles, California. At her death in 1930, Ben Scott’s widow, Martha Ford Scott, owned an 86-acre plantation, Ben’s lot from the plantation.¹⁰



Partition of Frogmore Plantation dated 5 January 1904. Source: Succession #1003, 18th Judicial District Court, Pointe Coupee Parish Clerk of Court, New Roads, La.

Endnotes:

1. Some researchers have asserted that Douglas Hamilton's wife was named Anna Scott and was related to the Scott men, but several records identify her as Joanna Semple or Sample. The 1880 census of Ward 10 of Pointe Coupee Parish lists Douglas Hamilton (age 20) and Joanna Semple (age 21), who have not yet married, living four households apart.
2. Harry A.L. Floyd (1873-1904) was born in San Francisco, California. She married in 1903 M.B. Gopchevitch, a reputed Serbian nobleman, but who worked as a grip man on a San Francisco cable car. She died a few months after the wedding leaving no heirs. She was buried in Cypress Lawn Memorial Park, Colma, San Mateo, California (Find-A-Grave Memorial ID No. 225153669).
3. Original Acts, 1897, #17719, 16 and 19 Jan. 1897, Pointe Coupee Parish Clerk of Court, New Roads, La.
4. Original Acts, 1905, vol. 2, #23832 and #23854, 30 Mar. 1905 and 14 July 1905, Pointe Coupee Parish Clerk of Court, New Roads, La.
5. Orleans Deaths, 1934, vol. 205, p. 2377, Louisiana State Archives, Baton Rouge, La.
6. Statewide Deaths, 1935, vol. 29, #11844, Louisiana State Archives, Baton Rouge, La.
7. Statewide Deaths, 1936, vol. 33, #14531, Louisiana State Archives, Baton Rouge, La.
8. Statewide Deaths, 1938, vol. 29, #13055, Louisiana State Archives, Baton Rouge, La.
9. Statewide Deaths, 1942, vol. 502, #235, Louisiana State Archives, Baton Rouge, La.
10. Succession #1003, 18th Judicial District Court, Pointe Coupee Parish Clerk of Court, New Roads, La.